

Air Conditioning

Product Information

MSZ-EF R410A
Zen Inverter Heat Pump
Wall Mounted System

Making a
World of
Difference

Mseries



The **Zen Series** is a wall mounted system that blends energy efficiency with a sophisticated, streamlined design.

Combining an impressively low power consumption with a quiet, yet powerful performance, units have a distinctively styled front panel that not only looks appealing, but also helps to make cleaning of the unit easier.

Key Features

- Stylish design in a range of three distinct colours
- Energy efficient operation with a powerful performance
- Recognised by the Noise Abatement Society and awarded the Quiet Mark for industry leading low noise levels



Cooling | Heating | Ventilation | Controls

Product Information

MSZ-EF R410A Zen Inverter Heat Pump Wall Mounted System

Making a World of Difference



Black (B)



Silver (S)



White (W)



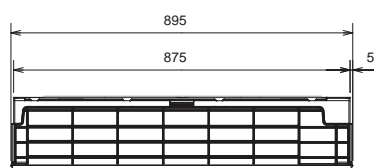
| MSZ-EF B/S/W - INDOOR UNITS | | MSZ-EF25VE3 B/S/W | MSZ-EF35VE3 B/S/W | MSZ-EF50VE3 B/S/W |
|---------------------------------|----------------------------|---------------------------------|---------------------------------|---------------------------------|
| CAPACITY (kW) | Heating (nominal) | 3.2 (1.1-4.2) | 4.0 (1.8-5.5) | 5.8 (1.6-7.5) |
| | Cooling (nominal) | 2.5 (1.2-3.4) | 3.5 (1.4-4.0) | 5.0 (1.4-5.4) |
| | Heating (UK) | 2.65 (0.91-3.49) | 3.32 (1.5-4.57) | 4.82 (1.33-6.23) |
| | Cooling (UK) | 2.48 (1.19-3.37) | 3.47 (1.38-3.97) | 4.96 (1.39-5.36) |
| SHF (nominal) | | 0.92 | 0.80 | 0.71 |
| COP / EER (nominal) | | 4.57 / 4.59 | 4.19 / 3.85 | 3.71 / 3.21 |
| SCOP / SEER (BS EN14825) | | 4.7 / 8.5 | 4.6 / 8.5 | 4.5 / 7.2 |
| ErP ENERGY EFFICIENCY CLASS | Heating/Cooling | A++ / A+++ | A++ / A+++ | A+ / A++ |
| AIRFLOW (l/s) | Heating - SLo-Lo-Mi-Hi-Shi | 67-77-103-148-198 | 67-77-103-148-212 | 107-122-150-185-220 |
| | Cooling - SLo-Lo-Mi-Hi-Shi | 67-77-105-138-175 | 67-77-105-138-175 | 97-113-132-155-183 |
| PIPE SIZE mm (in) | Gas | 9.52 (3/8") | 9.52 (3/8") | 12.7 (1/2") |
| | Liquid | 6.35 (1/4") | 6.35 (1/4") | 6.35 (1/4") |
| SOUND PRESSURE LEVEL (dBA) | | 21-24-29-37-45 / 21-23-29-36-42 | 21-24-30-38-46 / 21-24-29-36-42 | 30-33-37-43-49 / 30-33-36-40-43 |
| SOUND POWER LEVEL (dBA) | | 60 | 60 | 60 |
| DIMENSIONS (mm) | Width x Depth x Height | 885 x 195 x 299 | 885 x 195 x 299 | 885 x 195 x 299 |
| WEIGHT (kg) | | 11.5 | 11.5 | 11.5 |
| ELECTRICAL SUPPLY | | Fed by Outdoor Unit | Fed by Outdoor Unit | Fed by Outdoor Unit |
| FUSE RATING (BS88) – HRC (A) | | 6 | 6 | 6 |
| INTERCONNECTING CABLE No. CORES | | 4 | 4 | 4 |

| MUZ-EF - OUTDOOR UNITS | | MUZ-EF25VE | MUZ-EF35VE | MUZ-EF50VE |
|---|---------------------------|-----------------|-----------------|------------------|
| SOUND PRESSURE LEVEL (dBA) | Heating/Cooling | 48 / 47 | 50 / 49 | 52 / 52 |
| SOUND POWER LEVEL (dBA) | Cooling | 58 | 61 | 65 |
| WEIGHT (kg) | | 30 | 35 | 54 |
| DIMENSIONS (mm) | Width x Depth x Height | 800 x 285 x 550 | 800 x 285 x 550 | 840 x 330 x 880 |
| ELECTRICAL SUPPLY | | 220-240v, 50Hz | 220-240v, 50Hz | 220-240v, 50Hz |
| PHASE | | Single | Single | Single |
| SYSTEM POWER INPUT (kW) | Heating/Cooling (nominal) | 0.700 / 0.545 | 0.955 / 0.910 | 1.565 / 1.560 |
| | Heating/Cooling (UK) | 0.64 / 0.44 | 0.87 / 0.73 | 1.42 / 1.25 |
| STARTING CURRENT (A) | | 3.5 | 4.4 | 7 |
| SYSTEM RUNNING CURRENT (A) | Heating/Cooling [MAX] | 3.5 / 2.9 [7.3] | 4.4 / 4.2 [8.5] | 7.0 / 6.9 [12.4] |
| FUSE RATING (BS88) – HRC (A) | | 10 | 10 | 16 |
| MAINS CABLE No. CORES | | 3 | 3 | 3 |
| MAX PIPE LENGTH (m) | | 20 | 20 | 30 |
| MAX HEIGHT DIFFERENCE (m) | | 12 | 12 | 15 |
| CHARGE REFRIGERANT (kg) / CO ₂ EQUIVALENT (t) - R410A (GWP 2088) - 7m | | 0.8 / 1.68 | 1.15 / 2.41 | 1.45 / 3.03 |
| MAX ADDITIONAL REFRIGERANT (kg) / CO ₂ EQUIVALENT (t) - R410A (GWP 2088) | | 0.39 / 0.82 | 0.39 / 0.82 | 0.46 / 0.97 |

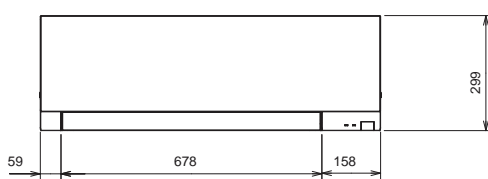
Notes: Black (B), Silver (S), White (W)

PRODUCT DIMENSIONS

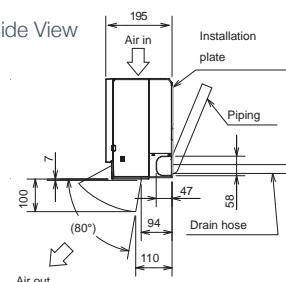
Upper View



Front View



Side View



Telephone: 01707 282880

email: air.conditioning@meuk.mee.com

web: airconditioning.mitsubishielectric.co.uk

UNITED KINGDOM Mitsubishi Electric Europe Living Environment Systems Division
Travellers Lane, Hatfield, Hertfordshire, AL10 8XB, England General Enquiries Telephone: 01707 282880 Fax: 01707 278881

IRELAND Mitsubishi Electric Europe Westgate Business Park, Ballymount, Dublin 24, Ireland
Telephone: Dublin (01) 419 8800 Fax: Dublin (01) 419 8890 International code: (003531)

Country of origin: United Kingdom – Japan – Thailand – Malaysia. ©Mitsubishi Electric Europe 2017. Mitsubishi and Mitsubishi Electric are trademarks of Mitsubishi Electric Europe B.V. The company reserves the right to make any variation in technical specification to the equipment described, or to withdraw or replace products without prior notification or public announcement. Mitsubishi Electric is constantly developing and improving its products. All descriptions, illustrations, drawings and specifications in this publication present only general particulars and shall not form part of any contract. All goods are supplied subject to the Company's General Conditions of Sale, a copy of which is available on request. Third-party product and brand names may be trademarks or registered trademarks of their respective owners.

Note: The fuse rating is for guidance only. Please refer to the relevant databook for detailed specification. It is the responsibility of a qualified electrical/electrical engineer to select the correct cable size and fuse rating based on current regulation and site specific conditions. Mitsubishi Electric's air conditioning equipment and heat pump systems contain a fluorinated greenhouse gas, R410A (GWP:2088), R32 (GWP:675), R407C (GWP:1774) or R134a (GWP:1430). These GWP values are based on Regulation (EU) No 517/2014 from IPCC 4th edition. In case of Regulation (EU) No.626/2011 from IPCC 3rd edition, these are as follows: R410A (GWP:1975), R32 (GWP: 550), R407C (GWP:1650) or R134a (GWP:1300).



www.greengateway.mitsubishielectric.co.uk

Mitsubishi Electric UK's commitment
to the environment



Follow us @meuk_les
Follow us @green_gateway



Mitsubishi Electric
Living Environmental Systems UK



mitsubishielectric2



thehub.mitsubishielectric.co.uk

Effective as of September 2017